

Organisation Chart of
inwent
 Internationale Weiterbildung und Entwicklung gGmbH Capacity Building
 International, Germany

Friedrich-Ebert-Allee 40, 53113 Bonn (mail address)
 53046 Bonn (P.O. Box 12 06 23)
 Telephone: ++49 (0)228 4460-0
 Fax: ++49 (0)228 4460-1766
 Internet: www.inwent.org

Managing Director
 Dr. Gudrun Kochendoerfer-Lucius

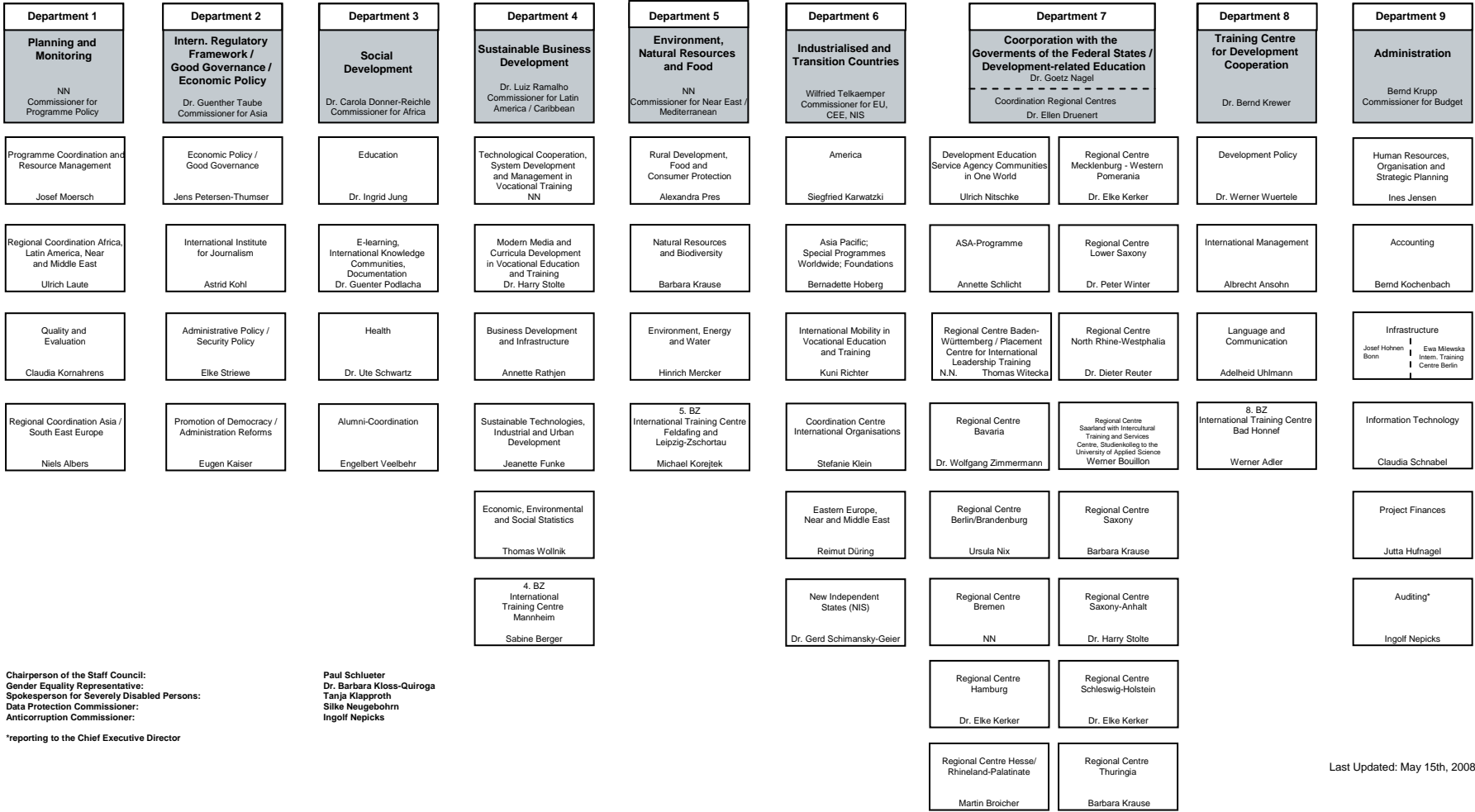
Chief Executive Director
 Dr. Ulrich Popp

Managing Director
 Bernd Schleich

EF
Development Policy Forum
 Astrid Kuehl

S01
Institutional Liaison and General Legal Affairs
 Henriette Strothmann

S02
Corporate Communications
 Ute Lange



Chairperson of the Staff Council:
 Gender Equality Representative:
 Spokesperson for Severely Disabled Persons:
 Data Protection Commissioner:
 Anticorruption Commissioner:

Paul Schlueter
 Dr. Barbara Kloss-Quiroga
 Tanja Klapproth
 Silke Neugebohm
 Ingolf Nepicks

*reporting to the Chief Executive Director

